

You'll Taste the Difference



Designed to solve a wide variety of water quality issues, Nelsen reverse-osmosis drinking water systems provide you with compact, affordable and effective solutions for achieving the best possible quality drinking water for your home.

An innovative leader in water treatment since 1954, Nelsen assures you the highest quality and reliability in the industry.

Nelsen Water Treatment systems are sold, installed and serviced by independently owned and operated Nelsen Dealers nationwide.



NelsenWater[™]
Treatment Solutions



Is Your Tap Water Safe?

Is your tap water safe to drink? Well, nearly all U.S. municipalities meet water quality and safety standards set by the federal government. However, these Primary Drinking Water Standards represent only minimum requirements. And while tests to verify compliance are conducted at the treatment plants, pollutants may enter your tap water as it courses through the miles of pipe on its way to your home.

Then there's the question of taste. Just because the tap water is safe to drink, doesn't mean it tastes good or looks fresh. Only high-quality filtration ensures delicious water for both drinking and cooking.

This means you must either:

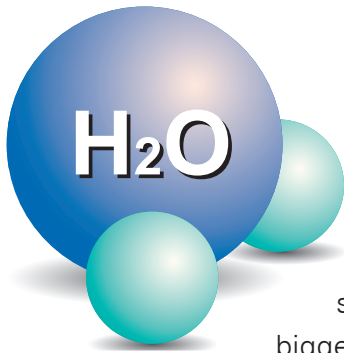
- Buy specially filtered bottled water. This high-cost option requires transporting bottles or scheduling deliveries.
- Attach a filter to your faucet. While this will rid water of many of the contaminants, it may not be able to handle them all.
- Install a home water treatment system under your sink. This option delivers the purity of bottled water with a greater convenience than a faucet-mounted system.



With Nelsen Reverse Osmosis Drinking Water Systems, great tasting water is now as close as your kitchen tap.

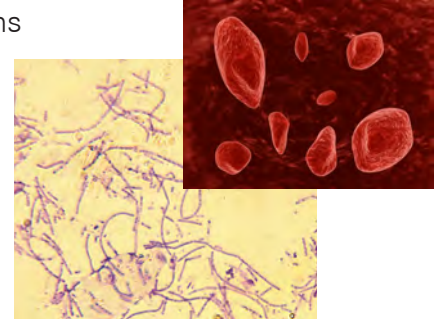
So is your peace of mind - knowing that you're providing your family with the best quality water right at home for drinking, cooking, ice and coffee making, baby-formula, pet feeding, dietary/medical uses, and precious plants watering.





Water *in its Purest Sense*

Nelsen reverse-osmosis drinking water systems significantly reduce unwanted substances bigger than 0.0001" such as carcinogens, heavy metal ions such as cadmium, chromium, lead and mercury; chlorine, cryptosporidium, salts, turbidity, nitrate, VOC's, organic compounds, dissolved solids, tastes and odors leaving only clean, great tasting water.



How *does the Process Work*

Reverse osmosis is the same process used by most major bottled water suppliers. With a Nelsen Reverse

Osmosis Drinking Water System, you can have the same highest-quality water available from your own faucet for a fraction of the cost of bottled water.

Just how does the reverse osmosis process work? During the process, water is forced through a semi-permeable membrane that traps contaminants. These contaminants are then flushed out of the system and down the drain, leaving your drinking water clean and fresh.



NRO4-50 (4-Stage)



NRO5-50 (5-Stage)



Included with the 4-Stage RO system: RO Unit, 3.2 Gallon Storage Tank, 50 gpd Membrane, Storage Tank Shut-off Ball Valve, Angle Stop Adapter Valve, Drain Saddle Valve, Faucet Package, Filter Housing Wrench, 1/4" & 3/8" Tubing, 5 Micron Sediment Cartridge, Carbon Block Cartridge.

The 5-Stage RO system includes all the features of the 4-Stage RO system with an additional third sump and a GAC (Granular Activated Carbon) cartridge.

Feed Water Guidelines

| | |
|---------------------------|------------|
| Maximum TDS | 2,000 ppm |
| Iron, max | 0.3 ppm |
| Hardness, (less than) | 15 gpg |
| Hydrogen sulfide | 0.0 ppm |
| Manganese, (less than) | 0.05 ppm |
| Turbidity, (less than) | 1 NTU |
| Pressure, min. / max, psi | 30 / 100 |
| Temperature, range (F) | 40° / 100° |
| pH | 3-11 |

Note: Pretreatment suggested if conditions exceed parameters.

Maintenance & Warranty

Pre and Post Filters - Recommended change every six months for regular usage, or once a year in light usage.

RO Membrane - Change recommended based on periodic TDS rejection tests. Typical is every two years.

Warranty - Components are warranted for one year from installation, excluding membrane, pre & post filters.

Caution: Do not use where water is microbiologically unsafe or with water of unknown quality without adequate disinfection before or after the unit. System must be maintained according to manufacturer's instructions.

Specifications

| | |
|--------------------------------------|-------------------------------------|
| Production | 50 gals. per day |
| Storage tank | 3.2 Gallon Tank |
| Membrane | Thin Film Composite (50 gpd) |
| Sediment pre-filter | 5 Micron Polypropylene |
| Carbon pre-filter | Solid Block Carbon |
| 2nd Carbon pre-filter (5-Stage only) | Granular Activated Carbon Cartridge |
| Carbon post filter | Inline Granular Activated Carbon |
| Faucet | Long Reach |
| Fittings | Quick Connect |

* Measured at Industry standard condition of 60 psi, 77° F, 500 ppm T.D.S.

Distributed by

